

Drive-on Dock Systems

INCLUDED IN THE KIT

Full blocks
Hole Plugs

Connecting
pins

Strengthening
bars

Plastic bolts
Plastic nuts

Spanner
Wrench

Fork Tool



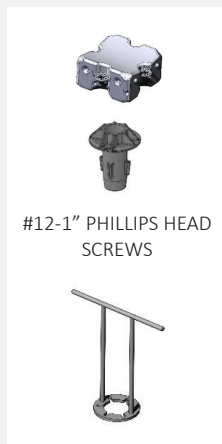
DRIVE-ON ONLY

Half blocks

Half block pins

Half block
screws

T-handle
wrench



#12-1" PHILLIPS HEAD
SCREWS

NOTE FOR DRIVE-ON DOCKS:

You will need a 2x4 to help raise the half blocks during assembly. We recommend 8' or more.

Drive-On Dock Systems Assembly

TIP: Assembling the dock on a flat trailer can make water entry easier.

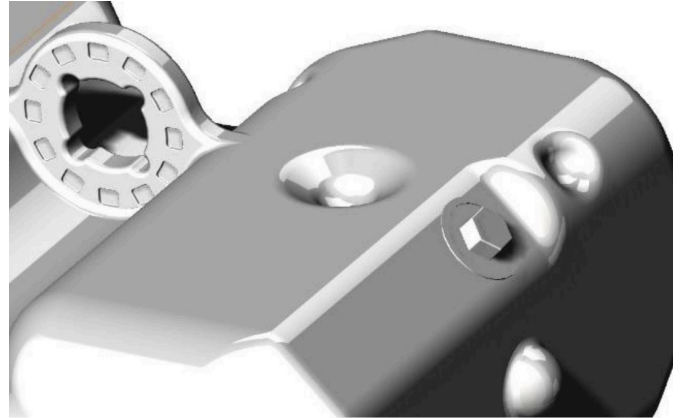
Step 1 - Install the plugs: Assemble the dock on a flat surface on land and then move it into the water.

Plug all blocks by hand tightening the plugs into the threading. Blocks can be plugged while still on the pallet after shrink wrap has been removed or blocks can be removed from pallet and placed on the ground with plug holes facing up.

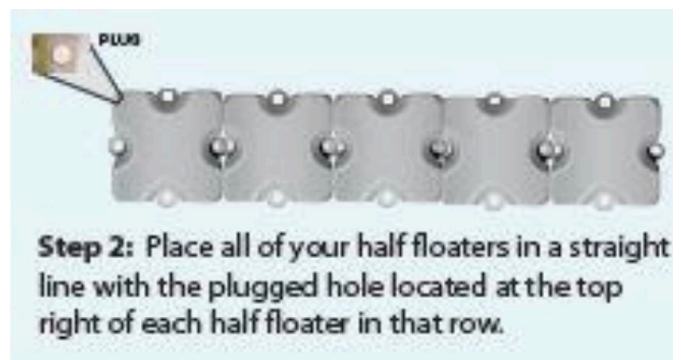
Come back around with a 1-1/8" socket or wrench to fully tighten the plugs.

Step 2 - Align the blocks: Place the half floaters upside down with the plugs located at the top right of each half floater in the row as shown in the Step 2 Illustration.

Insert and lock the half floater pins between the blocks by giving them a 1/8 rotation with the half floater T wrench.



Step 1- Install the plugs

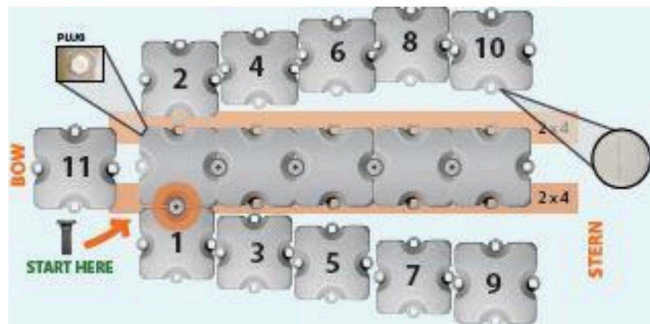


Step 2: Place all of your half floaters in a straight line with the plugged hole located at the top right of each half floater in that row.

Step 2- Align the blocks

Step 3 - Place 2x4 boards underneath the half floaters: Lift the row of upside down half floaters up onto 2x4's (or 2x6's).

This will bring the ear of the half floater up to the ear of the full floaters you will be attaching in step 4.

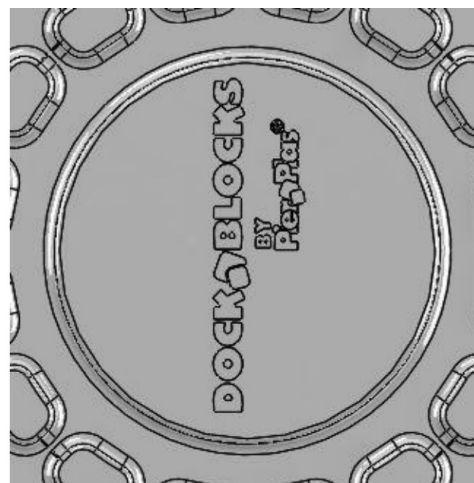


Step 4.1

Step 4 - Attach full floaters to half floaters working from bow to stern: It is important to follow the sequence in the step 4 illustration from bow to stern while staggering the full floaters from the left side first and then the right as you work your way back. Refer to video tutorial for helpful tips regarding this step.

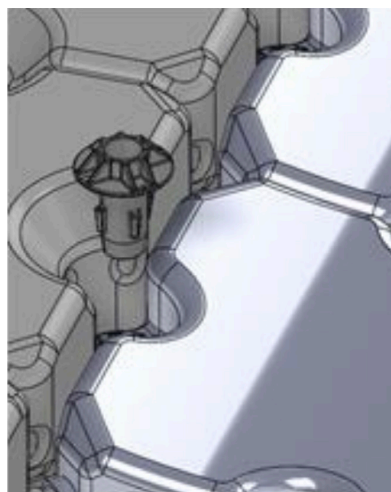
All full block logos should be oriented so they are read from the stern of the dock.

When looking from stern to bow, the plugs of the upside down half floaters are on the top right and the plugs for the full floaters will be on the bottom left.



Step 4.2

Refer to the video tutorial on www.dock-blocks.com/assembly for helpful tips regarding this step.



Step 4.3

Step 5 - Completing the core section: Insert the large, mushroom shaped connecting pins between the full floaters to complete the “core of the drive-on”.

For the remaining blocks insert connecting pins with their logos roughly 45 degrees to the dock. Force the connecting pins into place using a tamper or by stomping with your foot. (Use caution with either method to prevent injury). After all pins are pressed in, use the fork tool to turn the pins 45 degrees to lock the pins into place.

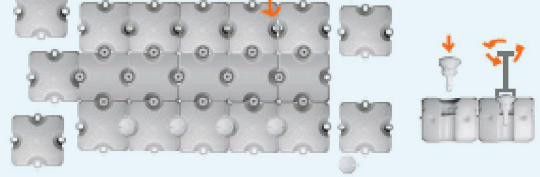
Each half block pin has two screw slots in the head. Fasten the pins into place using one of the provided #12-1” Phillips head screws in one of the screw slots.

Step 6 - Add remaining full floaters to complete the drive on platform: Refer to your configuration for the overall footprint design.

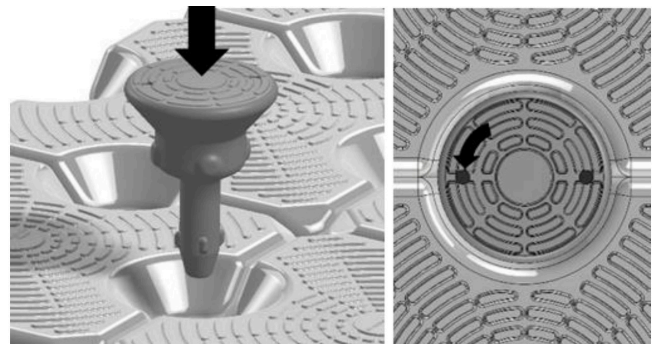
The 3 block wide core can be splashed in the water if you are tight on space and the outside rows of full floaters can be assembled on land and then connected to the core while floating.

Insert connecting pins and lock into place.

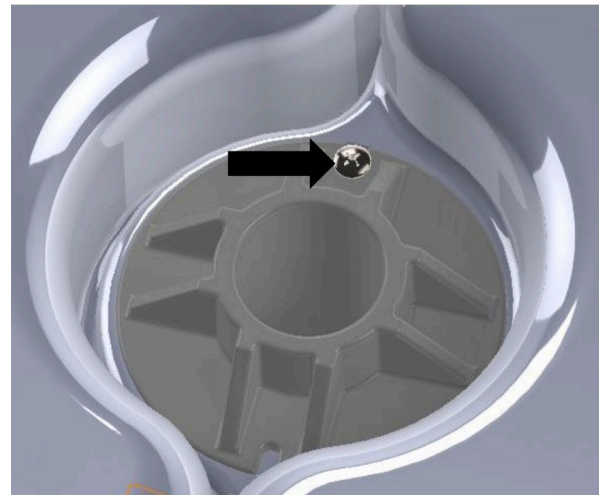
Step 5: Add connecting pins to the full blocks of that 3 row section, use a protected tamper or your foot to stomp the pins in. Lock each pin in with “fork tool”:



Step 5.1



Step 5.2



Step 5.3

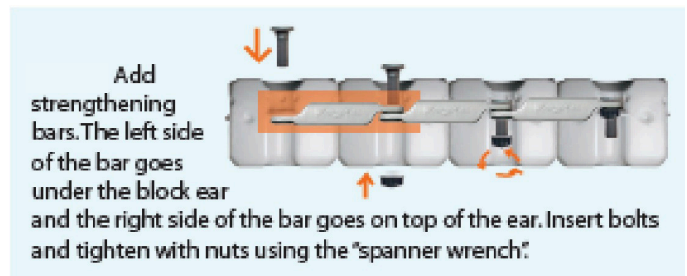
Step 7 - Add strengthening bars down sides and at bow of lift platform: The strengthening bars do not go on the stern (or entry) row of blocks as you want some flexibility for ease of driving the boat on.

The left end of the bar goes under the block ear and the right end goes on top of the block ear. Place bolts through the bars and block ears, then thread nuts on from the bottom. Tighten the nuts with the Dock Blocks spanner wrench.

Step 8 - Position & secure the dock: With the assembled dock in the water, secure it.

If the first row of blocks at the stern of your dock are full blocks, remove the plugs and fill the blocks half-way with water.

Reinstall the plug. This added weight helps bend the dock's stern into the water making it easier to drive on and off.



Step 7.1



Step 7.2

Videos

You can watch assembly videos at:
www.dock-blocks.com/assembly

Contact Us

Please direct any questions regarding the installation, setup and use of Dock Blocks to:

877-478-8440
or
service@dock-blocks.com