

Floating Dock Systems

INCLUDED IN THE KIT

Full blocks
Hole Plugs

Connecting
pins

Strengthening
bars

Plastic bolts
Plastic nuts

Spanner
Wrench

Fork Tool



Floating Dock Systems Assembly

Tip: Assembling the dock on a flat trailer can make water entry easier.

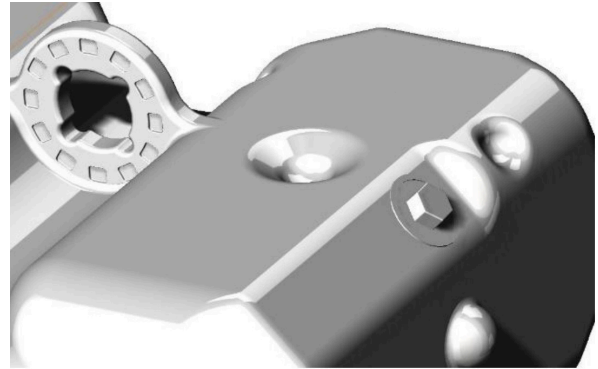
Step 1 - Install the plugs: Assemble the dock on a flat surface on land and then move it into the water.

Plug all blocks by hand tightening the plugs into the threading. Blocks can be plugged while still on the pallet after shrink wrap has been removed or blocks can be removed from pallet and placed on the ground with plug holes facing up.

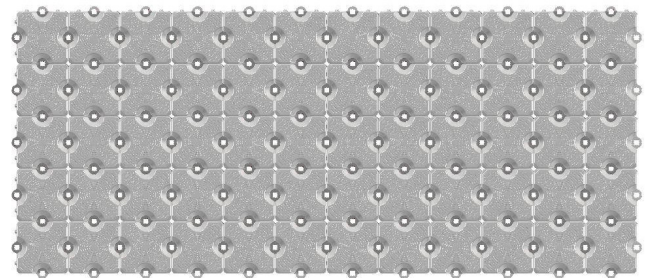
Come back around with a 1-1/8" socket or wrench to fully tighten the plugs.

Step 2 - Align the blocks: Lay all blocks with Dock Blocks logos facing up and in the same direction. The blocks will not align correctly if logos are not all facing the same direction. Arrange the blocks according to the desired length and width of the dock.

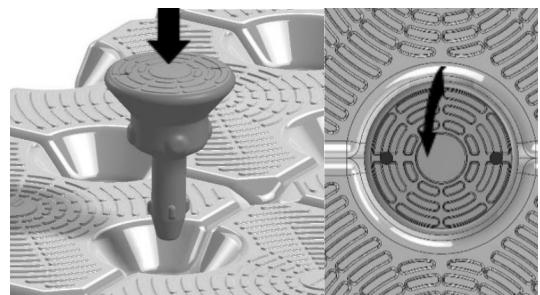
Step 3 - Connect the blocks: Insert all connecting pins so their logos are roughly 45 degrees to the blocks. Then force the connecting pins into position either using a tamper or by stomping with your foot. (Use caution with either method to prevent injury). After all pins are pressed in, use the fork tool to turn the pins 45 degrees to lock the pins into place.



Step 1 - Install the plugs.



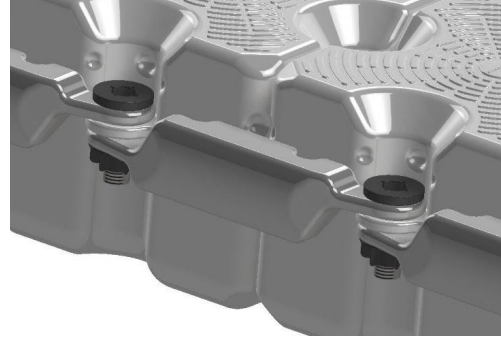
Step 2 - Align the blocks.



Step 3 - Connect the blocks.

Step 4 - Install the strengthening bars: The left end of the bar goes under the block ear and the right end goes on top of the block ear. Place bolts through the bars and block ears, then thread nuts on from the bottom. Tighten the nuts with the Dock Blocks spanner wrench.

Step 5 - Position & secure the dock: Slide the assembled dock into the water and secure it.



Step 4 - Install the strengthening bars

Videos

You can watch assembly videos at:
www.dock-blocks.com/assembly

Contact Us

Please direct any questions regarding the installation, setup and use of Dock Blocks to:

877-478-8440
or
service@dock-blocks.com