

DOCKBLOCKS™
of North America

Dock Blocks

2025 Catalog



Page 3

Full Floater – DB-002
Half Floater – DB-004
Strengthening Bar – DB-007

Page 4

Full Connecting Pin – DB-006
Half Connecting Pin – HFP-006
Nylon Nut – DB-020
Nylon Bolt – DB-011

Page 5

Tool Kit – DB-022
Half Floater Pin T Wrench – DB-034
Spanner Wrench DB-031
Fork Tool - DB-033

Page 6

Winch Block - RW-01
Winch Post - RW-02
Winch Collar - RW-03

Page 7

Reverse Winch – RW 04
Winch Pulley Cables & Rope - RW-05
4.5” Inside Rail Guides
(set of 2) – DB-013

Page 8

Safety Handrail – DB-021
Kayak Handrails – DB-028
(each) Sold as a pair
Kayak Storage Rack – DB-029

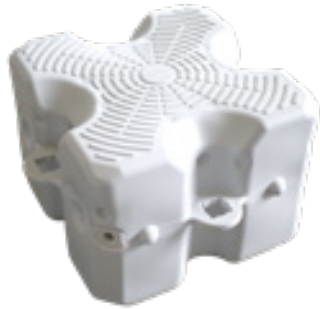
Page 9

6.25” Outside Rail Guides
(set of 2) – DB-014
Stabilization Beam – DB-027
Swim Ladder – DB-024

Page 10

Mooring Sleeve MS-01
Plug – DB-003
Cleat – DB-008

Full Floater – DB-002



Measurements: 19.75" x 19.75" x 16.2"

Weight: 14.4 lbs.

Material: Molecular weight High Density Polyethylene (HDPE)

Surface: Non-slip tread

Colors: Grey, Green, or Tan

Maximum Weight Capacity: 220 lbs. per floater

Half Floater – DB-004



Measurements: 19.75" x 19.75" x 10.83"

Weight: 14.24 lbs.

Material: Molecular weight High Density Polyethylene (HDPE)

Surface: Non-slip surface

Colors: Grey, Green, or Tan

Maximum weight capacity: 180 lbs. per half-floater

Feature: Drive-on docking system and low-profile platforms

Strengthening Bar – DB-007



Color: Grey, Green, or Tan

Measurements: 23.6" x 4.6" x 3.9"

Weight: 1.8 lbs.

Material: Molecular weight High Density Polyethylene (HDPE)

Full Connecting Pin – DB-006



Color: Grey, Green, or Tan

Measurements: 7.9" x 7.9" x 9.8"

Weight: 1.01 lbs.

Material: Molecular weight
High Density Polyethylene
(HDPE)

Surface: Non-slip surface

Half Connecting Pin – HFP-006



Color: Dark Grey

Measurements: 7.9" x 7.9" x 9.8"

Weight: 1.01 lbs.

Material: Molecular weight
High Density Polyethylene
(HDPE)

Nylon Nut – DB-020



Color: Grey

Measurements: 9cm x 9cm x 4c,

Weight: .09 lbs

Material: Nylon

Nylon Bolt – DB-011



Color: Grey

Measurements: 9cm x 9cm x 14cm

Weight: .28 lbs

Material: Nylon

Tool Kit – DB-022



Items Included:

Fork Tool - DB-033

Spanner Wrench - DB-031

Half Floater Pin T Wrench - DB-034

Half Floater Pin T Wrench – DB-034



Color: NA

Measurements:
H=12” W=12” Thickness ¼”

Weight: 1.6 lbs

Material: Aluminum

Used to connect half blocks to full blocks or other half blocks.

Spanner Wrench DB-031



Color: NA

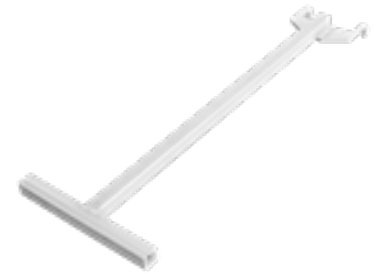
Measurements:
L=12” W=4” Thickness ¼”

Weight: .87 lbs

Material: Aluminum

Used to tighten nuts to bolts around the perimeter of the dock

Fork Tool - DB-033



Color: NA

Measurements:
L=29” W=10” Thickness ¼”

Weight: 3.62 lbs

Material: Aluminum

Used to connect full blocks to other full blocks

Winch Block - RW-01



Color: Gray, Green, Tan.
Dims= Block with Post

Measurements: L=24" W=24" H=32"

Weight: 25 lbs

Material: HDPE Block w/ Powder Coated
Aluminum Post- White

Winch Post - RW-02



Color: White

Weight: 5 lbs

Material: Powder-coated aluminum post

Winch Collar - RW-03



Measurements: 4" x 1" x 1/2"

Weight: .6 lbs

Material: Aluminum

Reverse Winch – RW 04



Measurements: L=7' W=4" H=6"

Weight: 8.5 lbs

Material: Zinc Coated Steel

Winch Pulley Cables & Rope - RW-05



Measurements: Cables= 20" Rope=30

Material: Stainless Steel Wire Rope- Sta
Set Double Braid Rope-3/8"

4.5" Inside Rail Guides (set of 2) – DB-013



Color: Black

Measurements: L=120" Circumference= 4.5"

Weight: 40 lbs per set

Material: HDPE Plastic-DR-11

Used on v hull boats to help keep the boat straight and make it easier to get on and off the dock.

Safety Handrail – DB-021



Color: Grey

Measurements: 3.5cm x 20cm x 125cm

Weight: 930g

Material: Nylon Bolt & Aluminum

Kayak Handrails – DB-028 (each) Sold as a pair



Measurements: L=109" H=9" W=2"

Weight: 18 lbs each= 36 lbs set

Material: Aluminum

Kayak Storage Rack – DB-029



Measurements: H=43" W=40" D=36"

Weight: 25 lbs

Material: Aluminum

6.25" Outside Rail Guides (set of 2) – DB-014



Color: Black

Measurements: L=60" C= 6.5"

Weight: 40 lbs per set

Material: HDPE Plastic-DR-11

Used to keep the boat level when on the dock.

Stabilization Beam – DB-027



Measurements: 104"-144" x 3" x 1/4"

Weight: 25 lbs – 40 lbs

Material: 6061 Aluminum Tubing

Used to keep the blocks flat in the water and avoid tacking around the boat. Also makes it easier to get on and off the dock.

Swim Ladder – DB-024



Measurements: 9.3" x 59.8"

Weight: 23.9 lbs.

Material: HDPE Connecting Pin and Aluminum Frame

Mooring Sleeve MS-01



Measurements: L=8.5" W=4.5" Thickness=2"

Weight: 2.5 lbs

Material: Aluminum

Attach to the side of any block and provide a 4" hole to run a pole through.

Plug - DB-003



Color: White

Measurements: 1" x 1"

Weight: .2 oz

Material: Molecular weight High Density Polyethylene (HDPE)

Cleat - DB-008



Color: Grey

Measurements: 15cm x 10cm x 26.5cm

Weight: 2 lbs

Material: Molecular weight High Density Polyethylene (HDPE)





Contact us today for your floating dock and boat lift needs!

4614 Rivers Avenue, N Charleston, SC 29405
(877) 478-8440
www.dock-blocks.com